

IMPORTANT! READ CAREFULLY AND KEEP INSTRUCTIONS FOR FUTURE REFERENCE

Read all instructions before assembling and using this carrier.

If you sell or give away this product, make sure you give this instruction to the new owner.

WARNING

WARNING– Your balance may be adversely affected by your movement and that of your child.

WARNING– Take care when bending or leaning forward or sideways.

WARNING– This carrier is not suitable for use during sporting activities.

For a baby: Min. 3.5kg - Max. 15kg.

This carrier conforms to EN13209-2:2015.

CAUTION: Child must face towards you until he or she can hold head upright.

Up to age of approximately 4 months a child is unable to support their own head.

Premature infants, infants with respiratory problems and infants under 4 months are at the greatest risk of suffocation.

For low birthweight babies and children with medical conditions, seek advice from a health professional before using the product.

Always use the head support when baby is facing the carrier wearer.

This carrier allows for child to be in forward, rearward facing, whilst worn on the front of the adult.

It is suitable to be worn on the back of the adult with child facing adult.

This carrier is made to suit children 3.5kg - 15kg (approximately 3-12 months) and should be worn by an adult only.

Construction of this product is not suitable for use with children who weigh less than 3.5kg or over 15kg.

Any attempt to use this carrier with a child heavier than the maximum 15kg, will cause tension and instability and damage to the carrying straps, buckles, fabrics and adjusters, which can result in risk of serious injury to the child.

Remove baby from carrier when you take off the carrier also.

CAUTION: Never use this carrier while engaging in activities such as cooking and cleaning which involve a heat source or exposure to chemicals.

Aware of hazards in the domestic environment e.g. heat sources, spilling of hot drink.

Never wear this carrier while driving or being a passenger in a motor vehicle.

Never use this carrier when balance or mobility is impaired because of exercise, drowsiness or medical condition.

Stop using the carrier if parts are missing or damaged.

ENSURE CHILD'S FACE IS IN VIEW AND UNCOVERED AT ALL TIMES.

DO NOT LEAVE BABY UNATTENDED IN THE CARRIER.

ALWAYS MONITOR YOUR CHILD WHEN USING THIS CARRIER.

PARTS

- | | |
|------------------------------|------------------------|
| A Upper Holding Strap | G Leg Strap |
| B Fastening & release Buckle | H Leg Opening |
| C Back Strap | I Front flap |
| D Lumbar support strap | J Elastic Tucking loop |
| E Shoulder straps | K Head rest |
| F Back height adjuster | |



STEP 1 ADJUST & FIT - ADULT



Familiarise yourself with the carrier and all its adjustable parts. Before putting baby into the carrier, make some initial adjustments to fit carrier to you.

1 Adjust the back Lumbar Support Strap (D), the overall Shoulder Strap (E) length with the Back Strap buckle (C), and position the height of Back Adjuster (F).

2 Secure excess strap with elastic tucking loop.

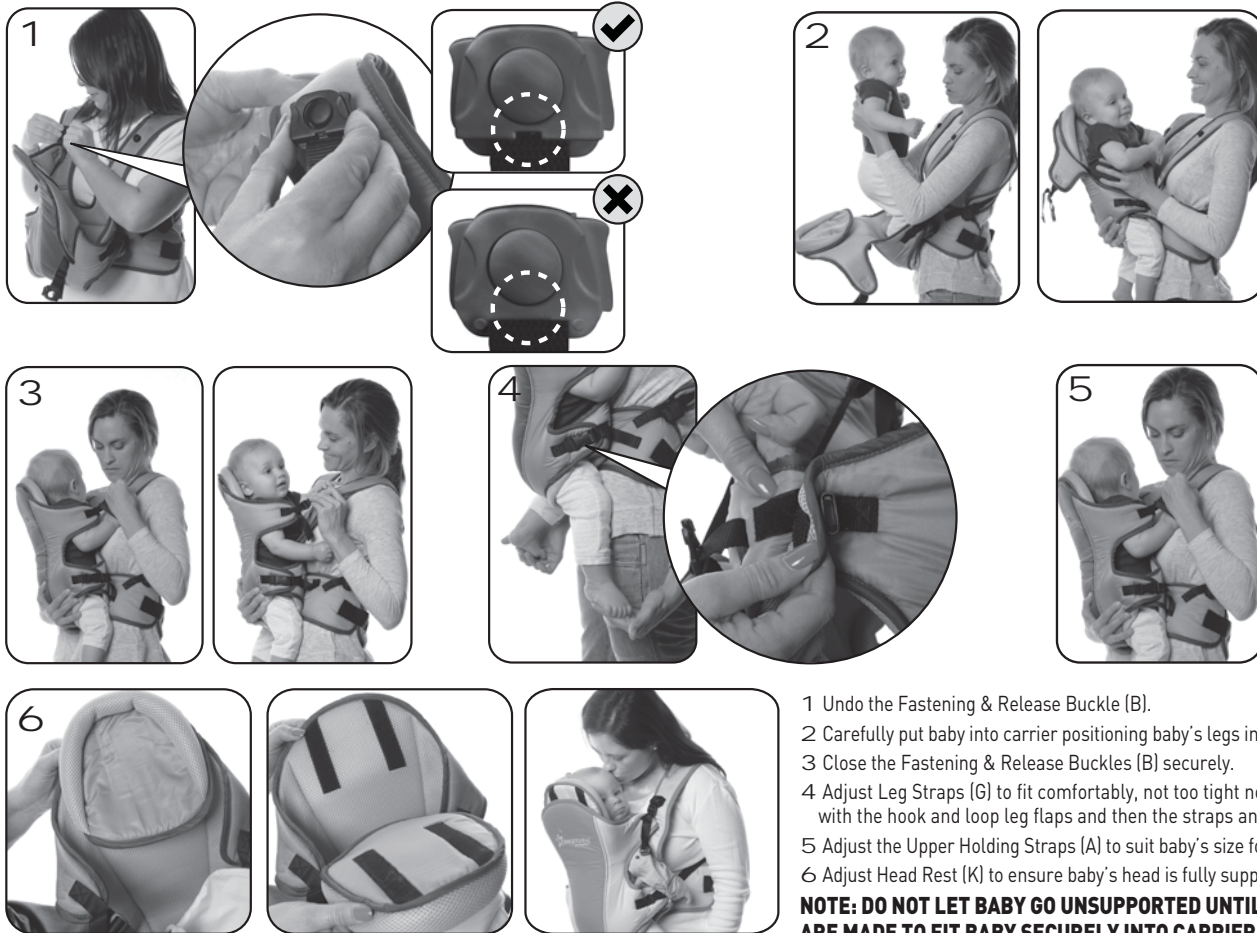
3 (Note that you will readjust these after putting baby into the carrier, and adjusting all the straps that relate to the baby.) Once initial fitting the carrier to you is complete, it is time to fit the carrier to your little one.

NOTE: DO NOT LET BABY GO UNSUPPORTED UNTIL ALL ADJUSTMENTS ARE MADE TO FIT BABY SECURELY INTO CARRIER AND ALL BUCKLES AND FASTENINGS ARE PROPERLY SECURED.



STEP 2 ADJUST & FIT - CHILD

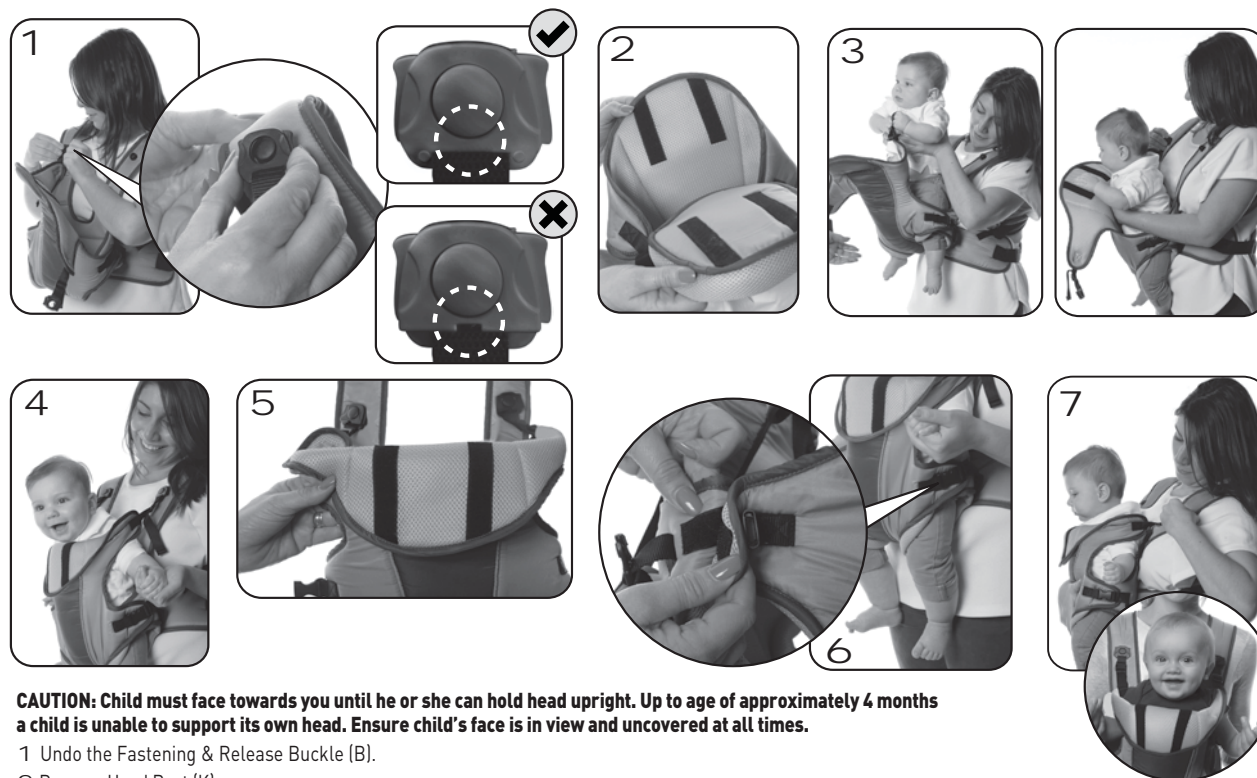
FORWARD FACING TO PARENT



- 1 Undo the Fastening & Release Buckle (B).
- 2 Carefully put baby into carrier positioning baby's legs into Leg Openings (H).
- 3 Close the Fastening & Release Buckles (B) securely.
- 4 Adjust Leg Straps (G) to fit comfortably, not too tight nor too loose. Secure with the hook and loop leg flaps and then the straps and buckles.
- 5 Adjust the Upper Holding Straps (A) to suit baby's size for support and comfort.
- 6 Adjust Head Rest (K) to ensure baby's head is fully supported.

NOTE: DO NOT LET BABY GO UNSUPPORTED UNTIL ALL ADJUSTMENTS ARE MADE TO FIT BABY SECURELY INTO CARRIER AND ALL BUCKLES AND FASTENINGS ARE PROPERLY SECURED.

REARWARD FACING TO PARENT

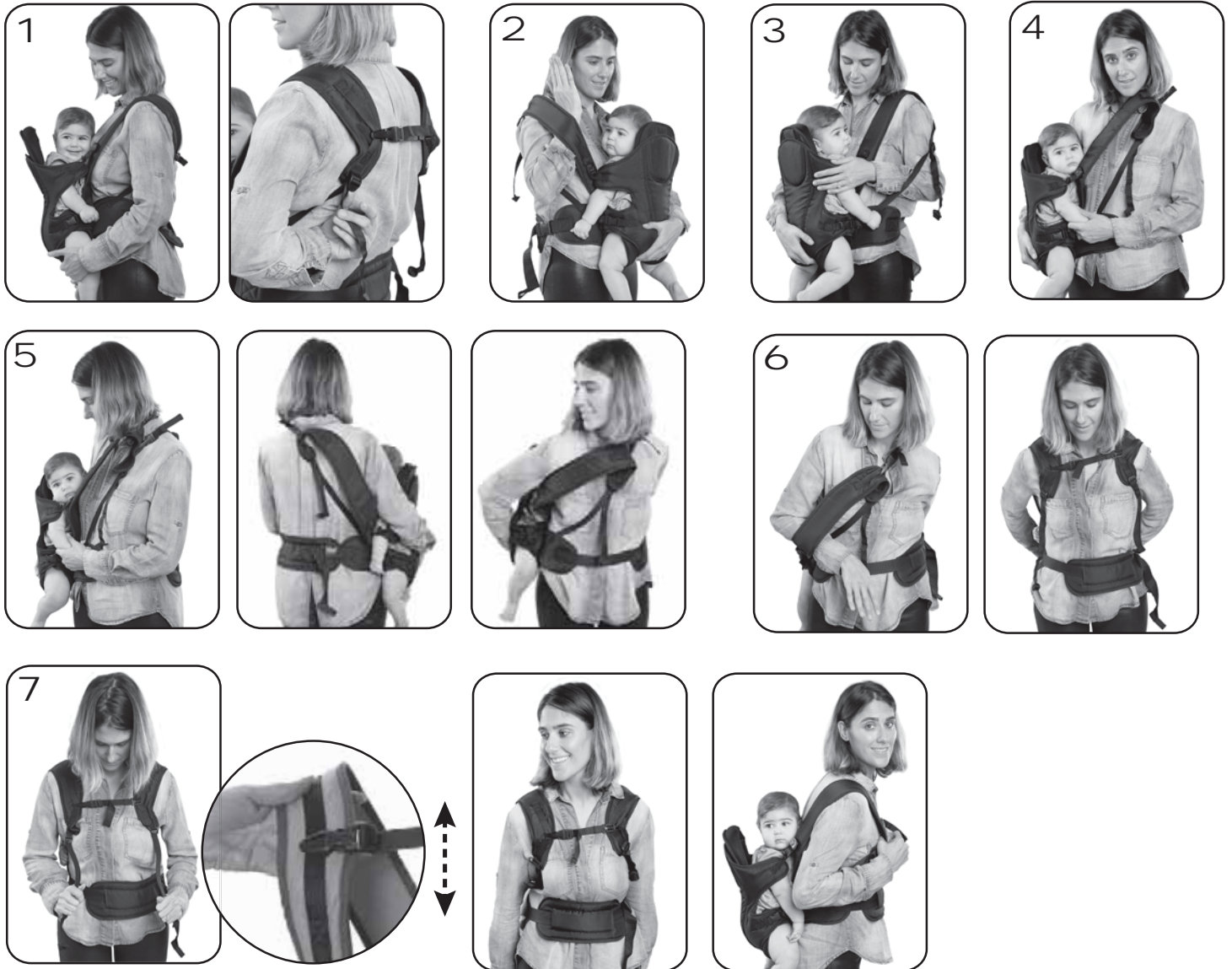


CAUTION: Child must face towards you until he or she can hold head upright. Up to age of approximately 4 months a child is unable to support its own head. Ensure child's face is in view and uncovered at all times.

- 1 Undo the Fastening & Release Buckle (B).
- 2 Remove Head Rest (K).
- 3 Carefully put baby into carrier positioning baby's legs into Leg Openings (H).
- 4 Close the Fastening & Release Buckles (B) securely.
- 5 Fold down Front Flap (I).
- 6 Adjust Leg Straps (G) to fit comfortably, not too tight nor too loose. Secure with the hook and loop leg flaps and then the straps and buckles.
- 7 Adjust the Upper Holding Straps (A) to suit baby's size for support and comfort.

NOTE: DO NOT LET BABY GO UNSUPPORTED UNTIL ALL ADJUSTMENTS ARE MADE TO FIT BABY SECURELY INTO CARRIER AND ALL BUCKLES AND FASTENINGS ARE PROPERLY SECURED.

BACK POSITION



CAUTION: For use with a child from 10 months of age with a maximum weight of 15kg.

- 1 Loosen the Shoulder Straps (E).
- 2 Raise right arm, upwards under the shoulder strap .
- 3 Shift left arm, down under lower part of the shoulder strap.
- 4 Raise this strap to sit on your left shoulder . Both shoulder straps are now on the left shoulder.
- 5 While fully supporting the child carefully move the carrier around to your back under your lifted right arm.
- 6 Slide shoulder straps back in place.
- 7 Tighten and adjust all straps.

STEP 3 FINAL ADJUSTMENTS



Do a final adjustment to suit baby's comfort and security.

Now also adjust any of the areas required to ensure you too are comfortable.

As you slowly loosen the support of holding the baby, do a final check that all areas are secure and comfortable for both of you.

You are now ready to head out on your first outing with your little one snuggled in to your new Dreambaby® Manhattan and Oxford Carrier.

As your baby grows, adjust the straps accordingly so baby is well supported and comfortable.

Caution: Always check to assure all buckles, snaps, straps and adjustments are secure before each use.

MAINTENANCE & CARE

Regularly check for ripped seams, torn straps or fabric and damaged fasteners.

Wash instructions: Hand wash in warm water with mild detergent. Line dry.

Do not bleach. Do not dry-clean. Do not iron.

WARNING

Your child will be protected to a maximum extent only if you carefully follow all the guidelines set down in this user's manual.

You must pay particular attention to all the warnings and ensure all necessary precautions are taken to prevent serious injury or impairment to the baby to guarantee the baby is safe, secure and unharmed.

You are solely responsible for the well being of the baby and must ensure you follow all instructions in this manual carefully, correctly and completely.

You must make sure that all users of the carrier read and follow the instructions carefully.

Adjustments must be made to suit each wearer and each child to be carried, every time the carrier is worn.

Failure to follow the instructions, the use and maintenance for this carrier may lead to serious injury or impairment of the child!

CONTACT DETAILS



Tee-Zed acknowledges that its customers may be entitled to statutory consumer guarantees and does not seek to exclude or limit them. These guarantees include that Tee-Zed's products are of acceptable quality. This Tee-Zed product is for the specific purpose detailed in the instructions and packaging and Tee-Zed considers use outside of that purpose to be abnormal use. To the maximum extent permitted by law, Tee-Zed does not accept any liability for damage:

- arising from abnormal use of the products;
- caused by installation or removal of the products other than in accordance with the supplied installation and removal instructions; or
- arising under the law of tort or contract.

Dreambaby® products by

Tee-Zed

Tee-Zed Products Pty Ltd
PO Box 2022,
Bondi Junction NSW 1355
Australia
☎ +61 (0)2 9386 4000
✉ info@tee-zed.com.au
www.dreambaby.com.au

Tee-Zed Products (N.Z.) Ltd
PO Box 64013,
Botany Town Centre Auckland
New Zealand
☎ +64 (0)9 274 8788
✉ info@tee-zed.co.nz
www.dreambaby.co.nz

Tee-Zed Products Ltd
PO Box 29227,
Dunfermline, KY12 2DN
United Kingdom
☎ +44 (0)844 800 9445
✉ info@tee-zed.co.uk
www.dreambaby.co.uk



dreambabysafety

YouTube

dreambabytv

Made in Dongguan, China.
©2020 Tee-Zed Products Pty Ltd

